

EP600 Energy Storage System

App User Manual

BLUETTI App

1. Introduction

BLUETTI App allows you to monitor and control the EP600 energy storage system (ESS) in the palm of your hand via Bluetooth or WiFi, with features like Real-time Alarm, Error Message, Data Collection, Operation Status, Parameter Configuration, and Firmware Upgrade.

Note:

Supported operating systems: Android 8.0 or above, iOS 11.0 or above.

Bluetooth is available on your phone.

The router supports WiFi of IEEE 802.11 b/g/n, 2.4GHz.

BLUETTI recommends a router with WPA or WPA2_PSK encryption. EP600 ESS doesn't support enterprise encryption (commonly used on public WiFi networks that require user authentication, like airport hot spots) and WEP and WPA TKIP encryption.

Pictures shown below are for illustration only. Actual UI may vary.

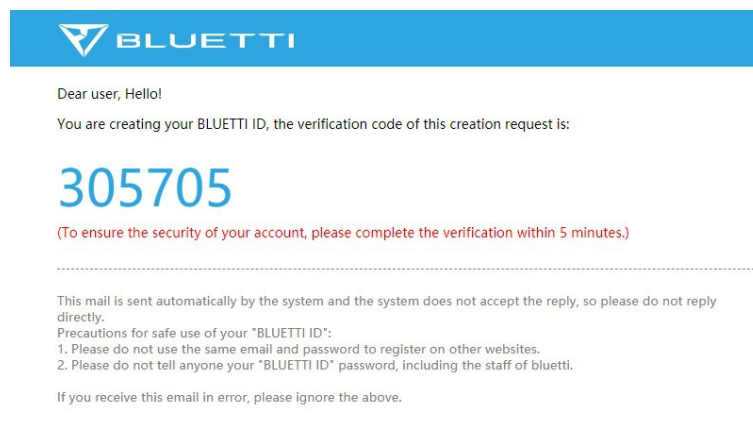
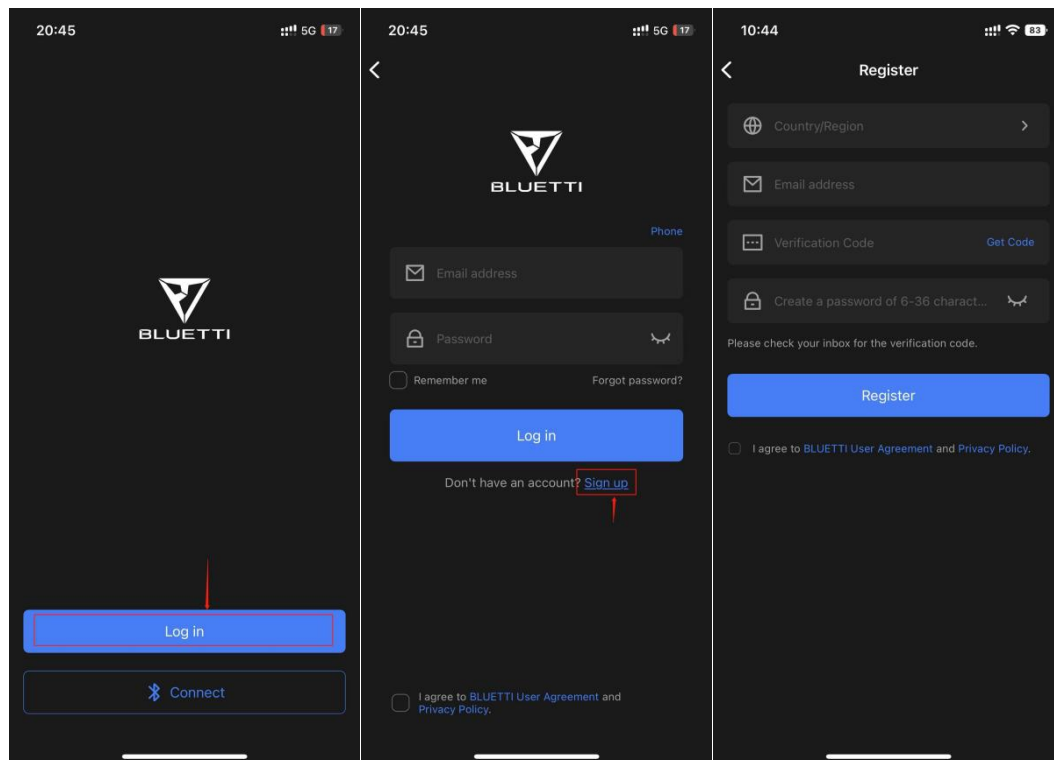
2. Download

Scan the QR code below to download the BLUETTI App, or search for "BLUETTI" in the App Store/Google Play.



3. Registration

- 1: Tap **Log in** on the home page.
- 2: Tap **Sign up**, fill your Email or phone number and the verification code, and then tap **Register** to create your BLUETTI account.

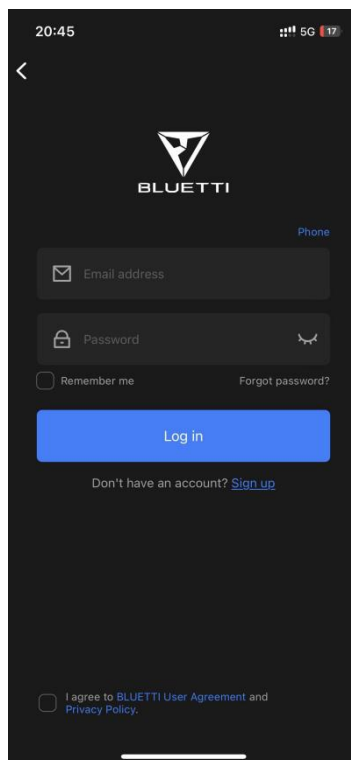


Note: If you do not see the email with verification code, check your "Junk mail" folder or "Spam" folder. If you don't find the email, there may be a delay and please try **Get Code** again. Please contact the BLUETTI customer service if the code is still unavailable.

4. Login

Input your Email address/Phone number and Password, then tap **Log in**.

Note: Please ensure BLUETTI App has access to your phone network.



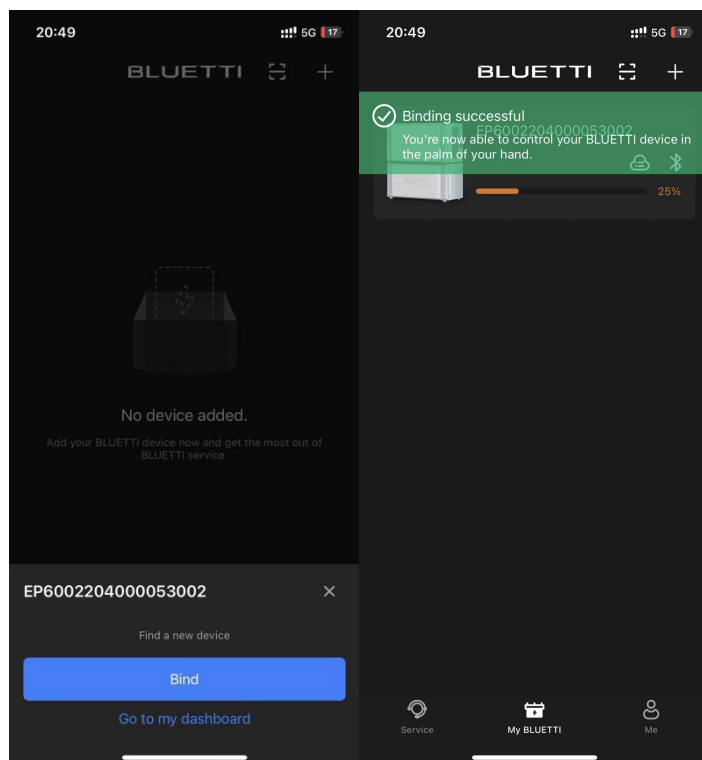
5. Bind


Before binding, please ensure that:

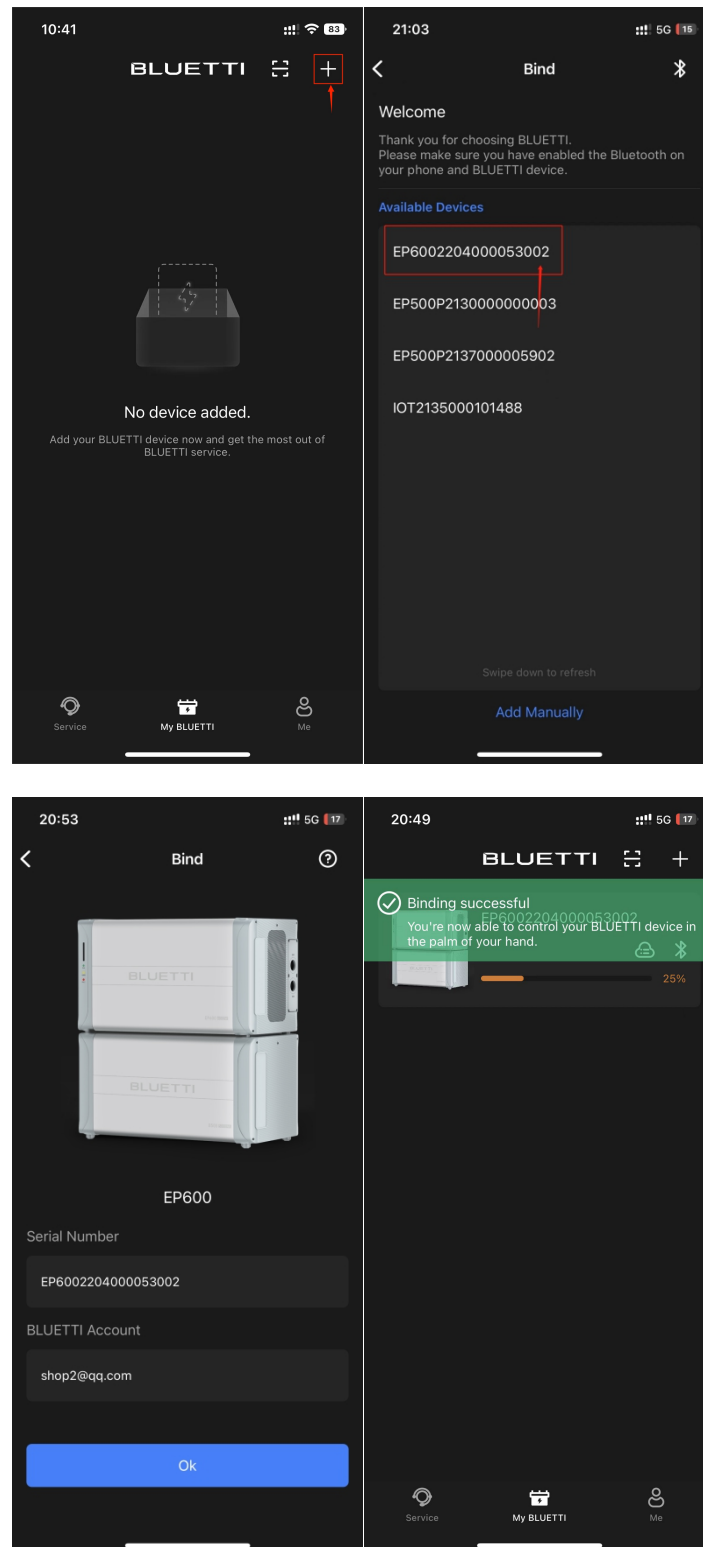
- BLUETTI App has access to your Bluetooth and location service (GPS).
- You've enabled the Bluetooth and GPS on your phone.
- EP600 ESS is in operation.


There are several ways to bind your EP600, choose an option below.

1: If you haven't registered your EP600 ESS yet, the App will automatically search for nearby Bluetooth devices when you enter the My BLUETTI page. Select your EP600 ESS in the pop-up and tap **Bind**. You will see the **Binding successful** pop-up when bound.

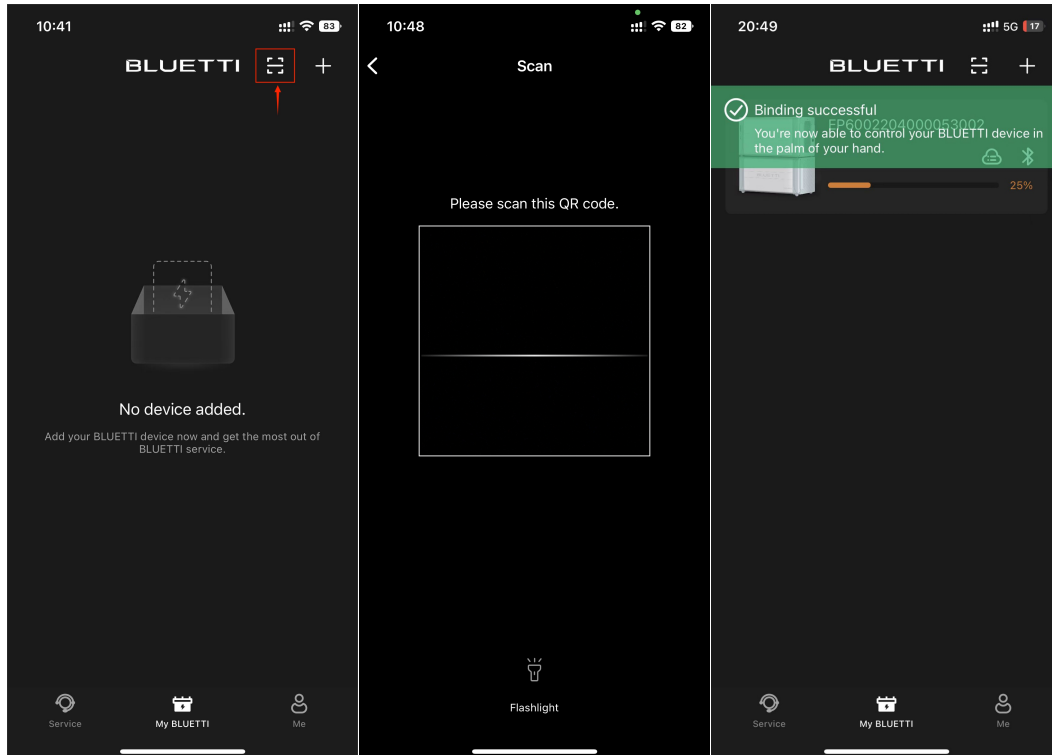



2: Tap  to search for nearby Bluetooth devices. Select your EP600 ESS in the available device list and tap **Ok** to bind. You will see the **Binding successful** pop-up when bound.



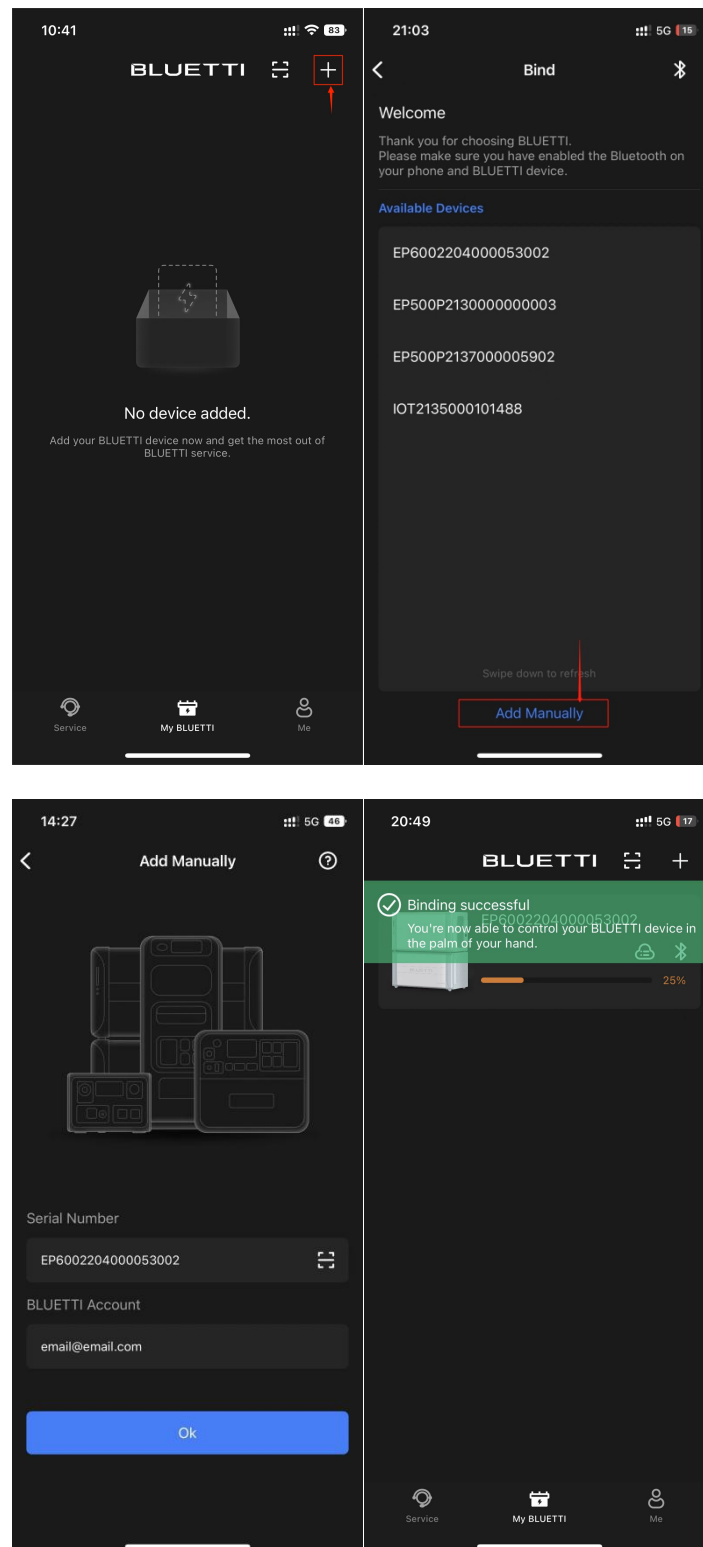
3: Tap  to scan your EP600 QR code. You will see the **Binding successful** pop-up when bound.

Note: The QR code is printed on the side of EP600.




4: Tap  and **Add Manually**. Fill in the device Serial Number (SN) and BLUETTI account to bind. You will see the **Binding successful** pop-up when bound.

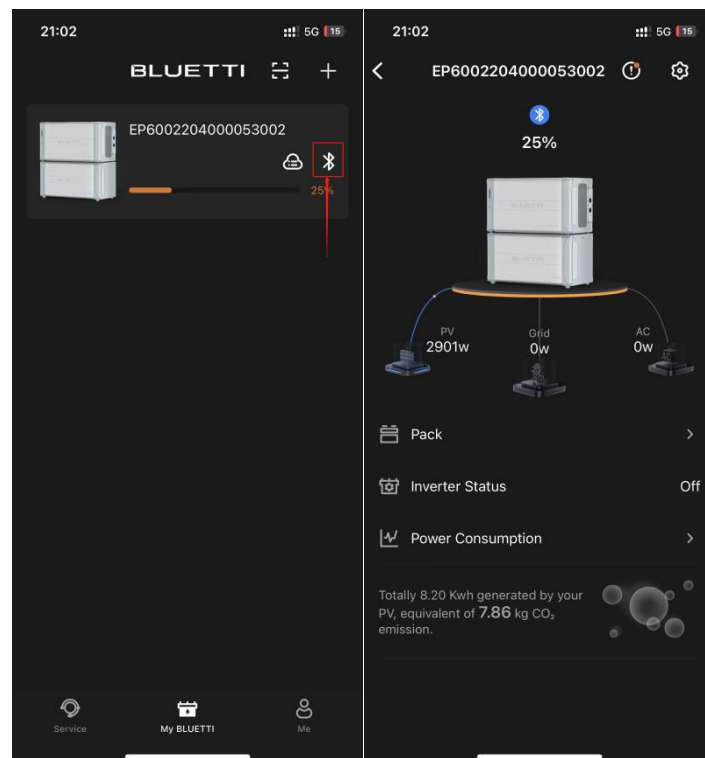
Note: The device SN is located below the QR code.

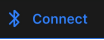


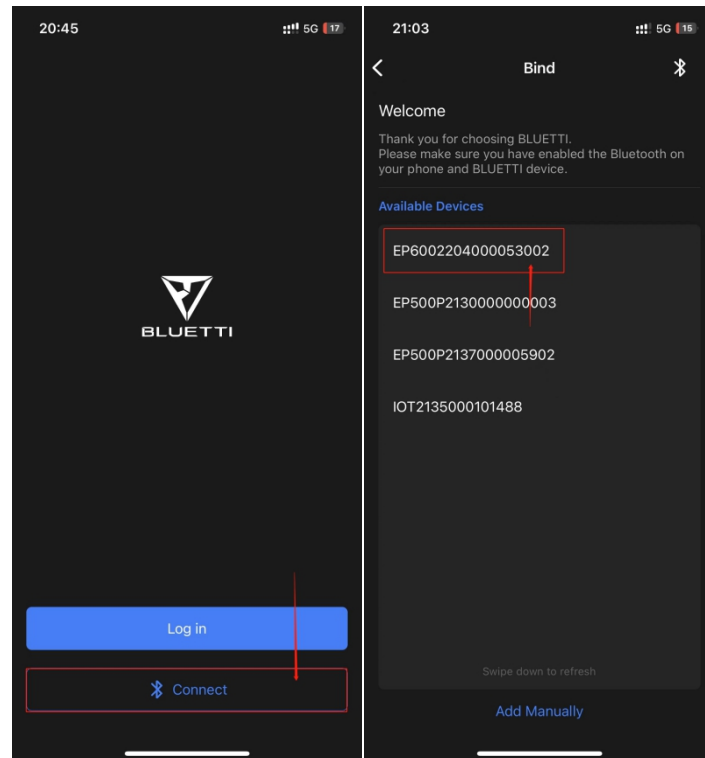
6. Connection

6.1 Bluetooth

1: If you've logged into your BLUETTI account, which is associated with the EP600 ESS you want to connect, tap  on My BLUETTI page.



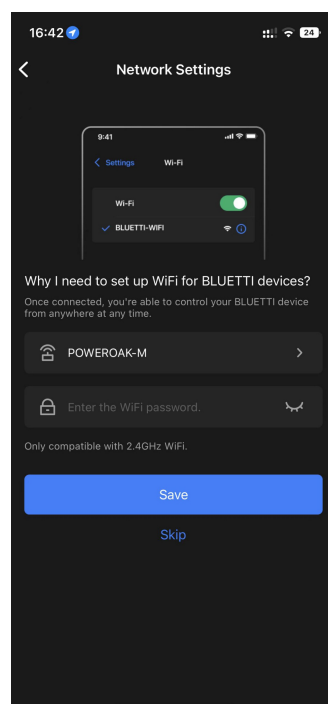
2: If you haven't registered an account, tap  on the home page for Bluetooth Direct Access.





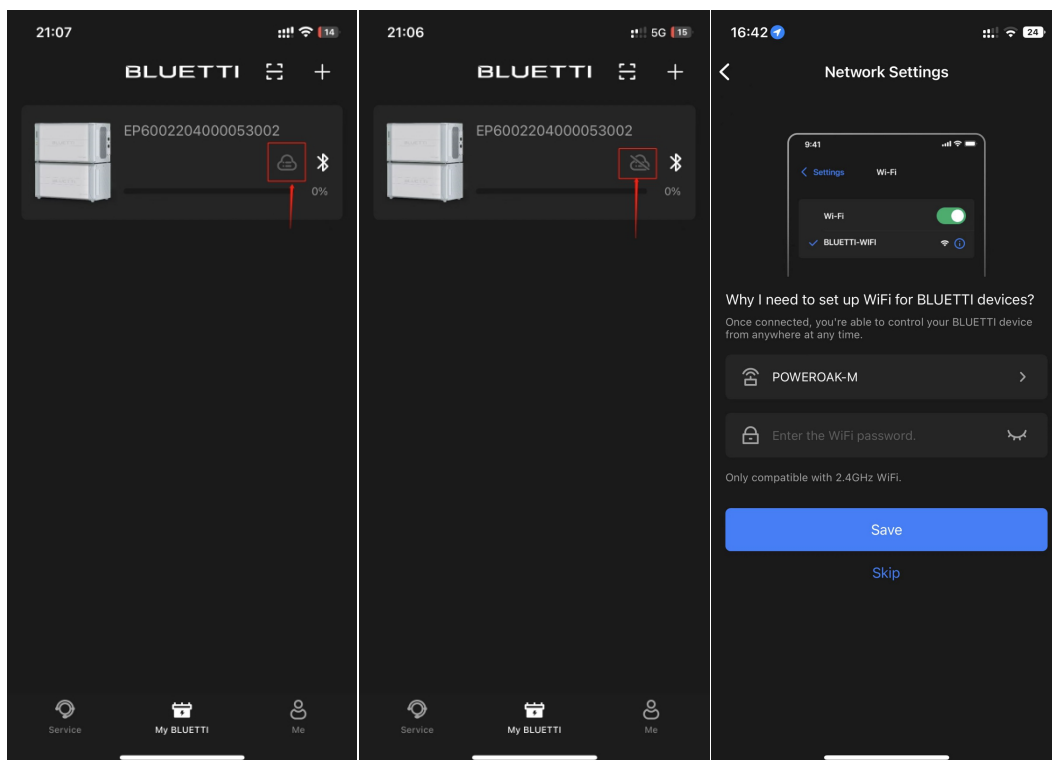
6.2 WiFi


6.2.1 WiFi Configuration

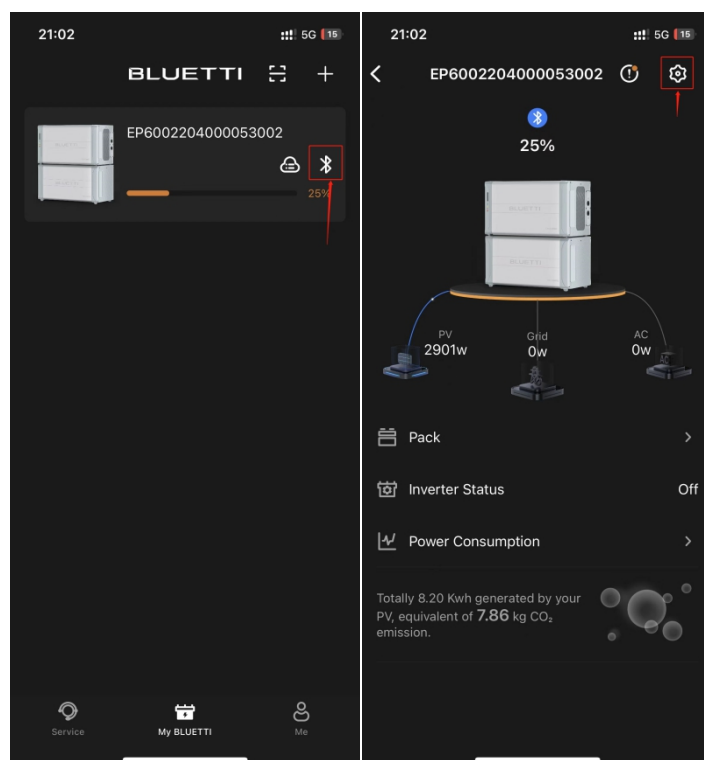
1: After successfully binding your EP600 ESS, set up the WiFi network. Fill in the Wi-Fi name (SSID) and password and tap **Save**.

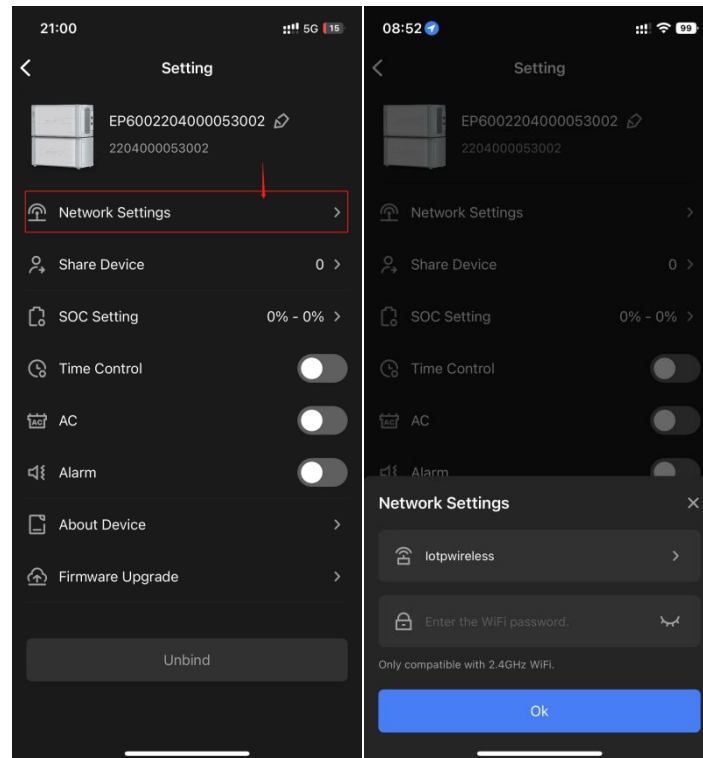


2: When your EP600 ESS's network is  or , tap the icon to set up the network. Fill in the Wi-Fi name (SSID) and password and tap **Save**.



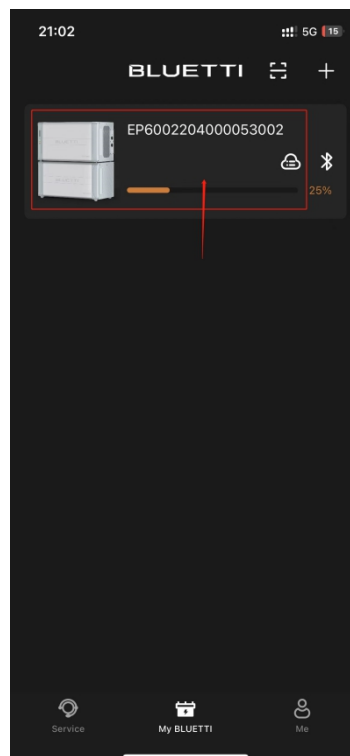
3: In the case of Bluetooth Direct Access, tap  to enter the Settings page and then set up the network. Tap **Network Settings**, fill in the Wi-Fi name (SSID) and password and tap **Ok**.





6.2.2 WiFi Connection

In the BLUETTI device list, tap the area as shown below and the App will connect to your EP600 ESS via WiFi. As long as your phone has internet access, you're able to control your EP600 ESS anytime, anywhere.




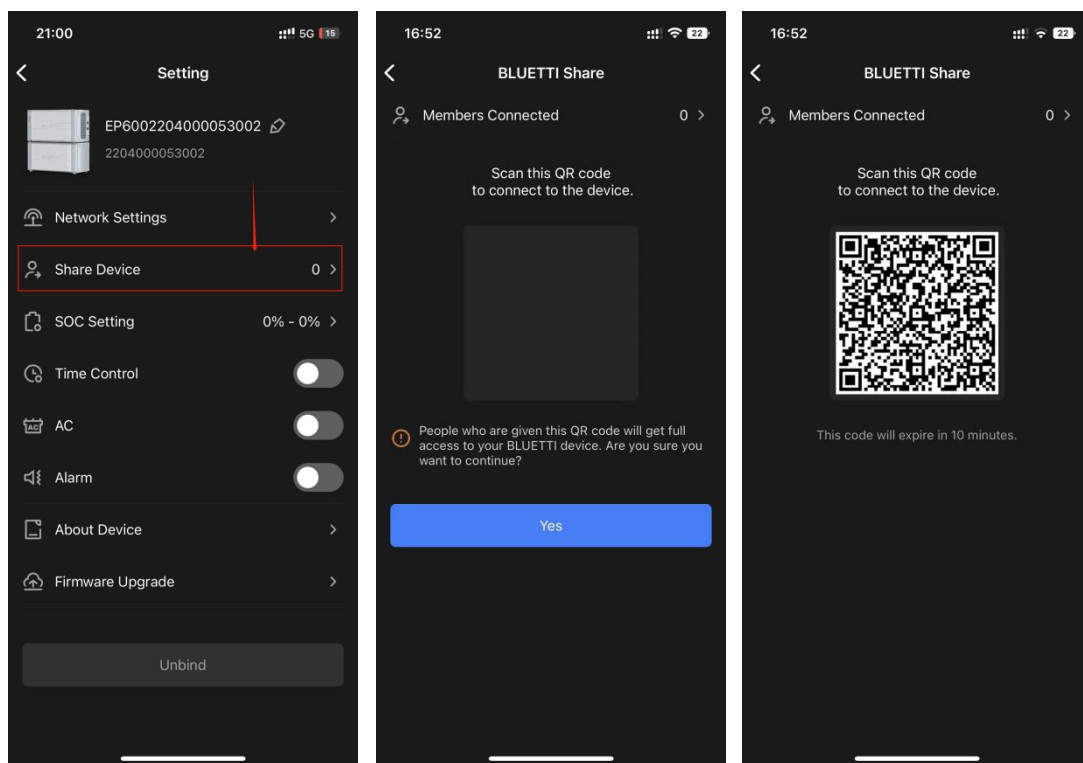
Note: The IoT controller of EP600 supports 2.4GHz Wi-Fi ONLY.


7. EP600 ESS Sharing

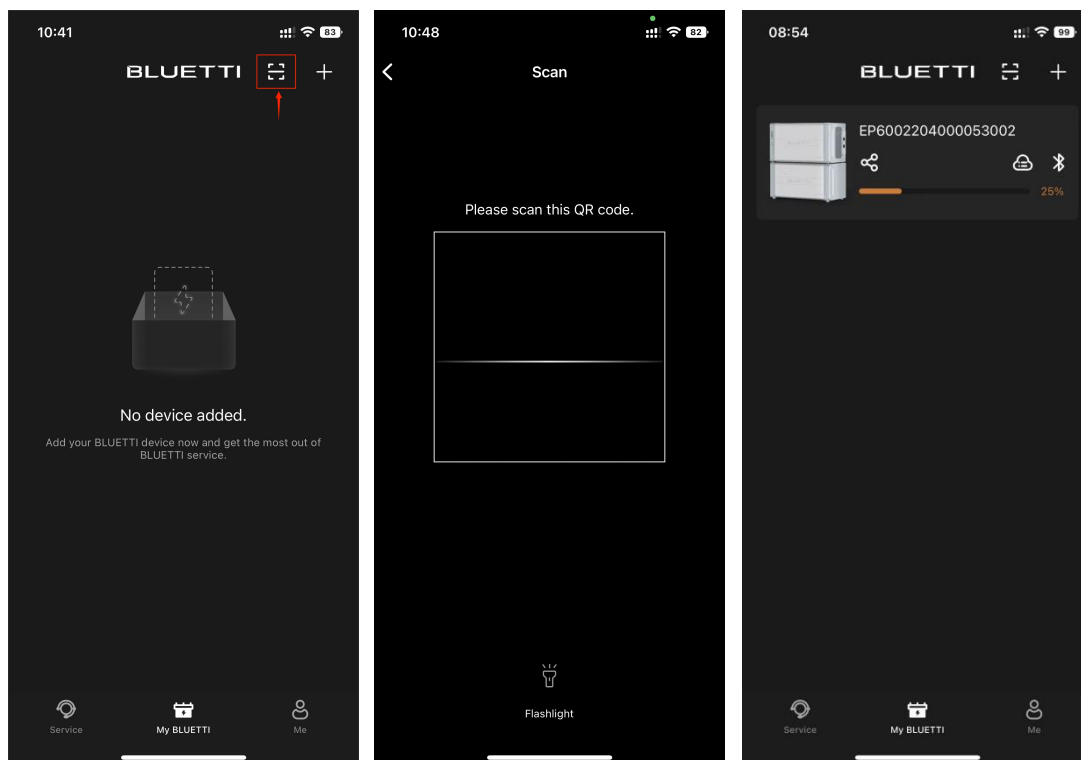
Before you share EP600 ESS to your family or friends, please ensure that:

- You've logged into your account bound to EP600 ESS.
- They have their own BLUETTI accounts.
- The EP600 ESS to be shared is connected to Wi-Fi.

Connect to your EP600S ESS via Bluetooth or WiFi, tap  in the upper right corner of the real-time operation page and enter the Settings page. Tap **Share Device**, and then tap **Yes** to generate a QR code.



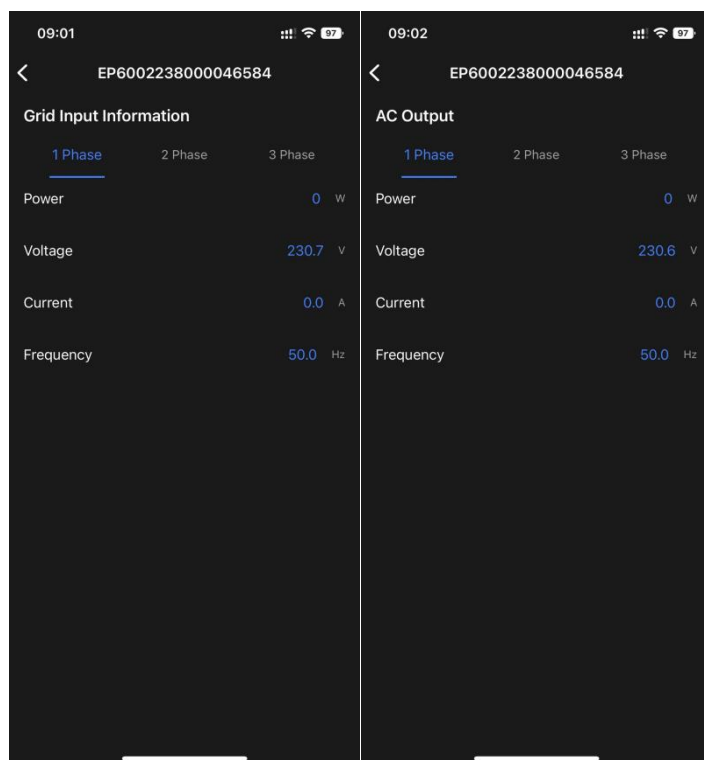
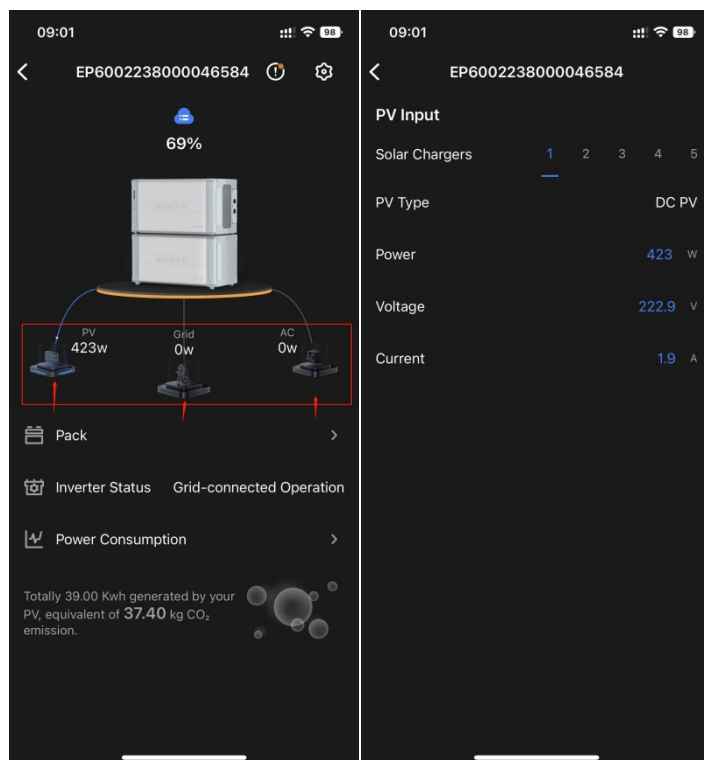
Login the account your EP600 ESS will be shared with, tap  to scan the generated QR code to add the shared ESS.



Note: The QR code will expire in 10 minutes.


8. Inverter Status

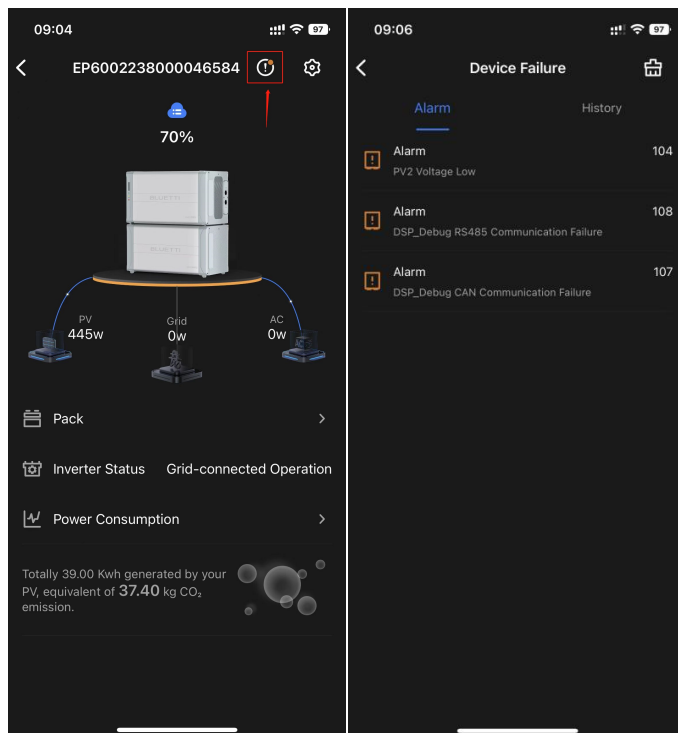
Once connected to EP600 ESS, you'll enter the real-time operation page which offers you an overview of your power consumption. You can check the PV Input, Grid Input/Output, AC Output and much more by tapping the corresponding buttons.



8.1 Inverter Alarm

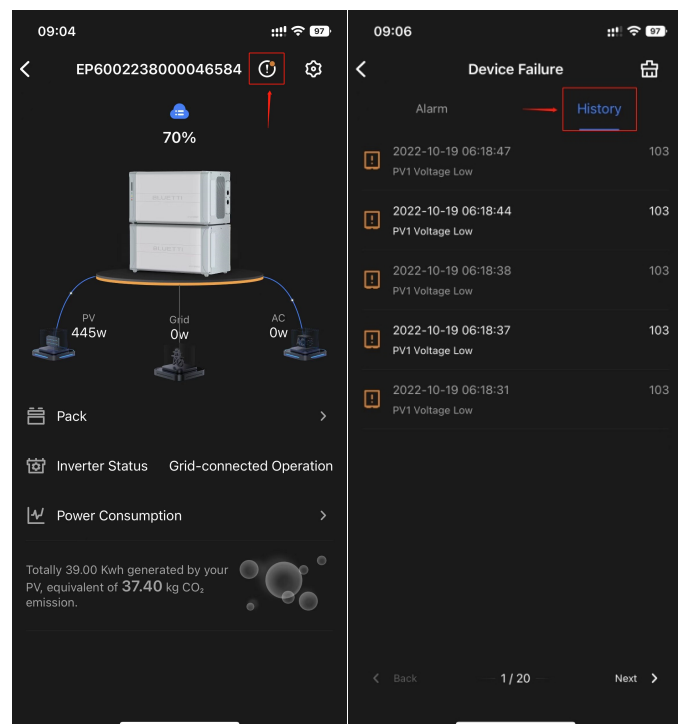
Current Alarm

Tap  to check the current alarm list.



Alarm History

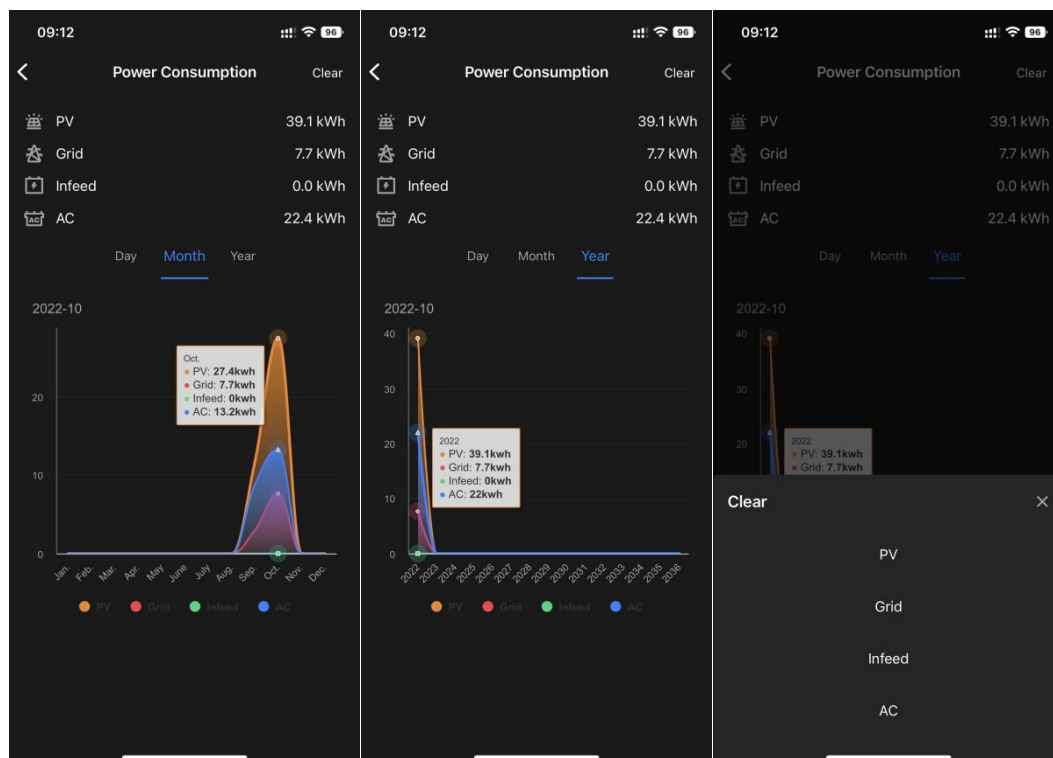
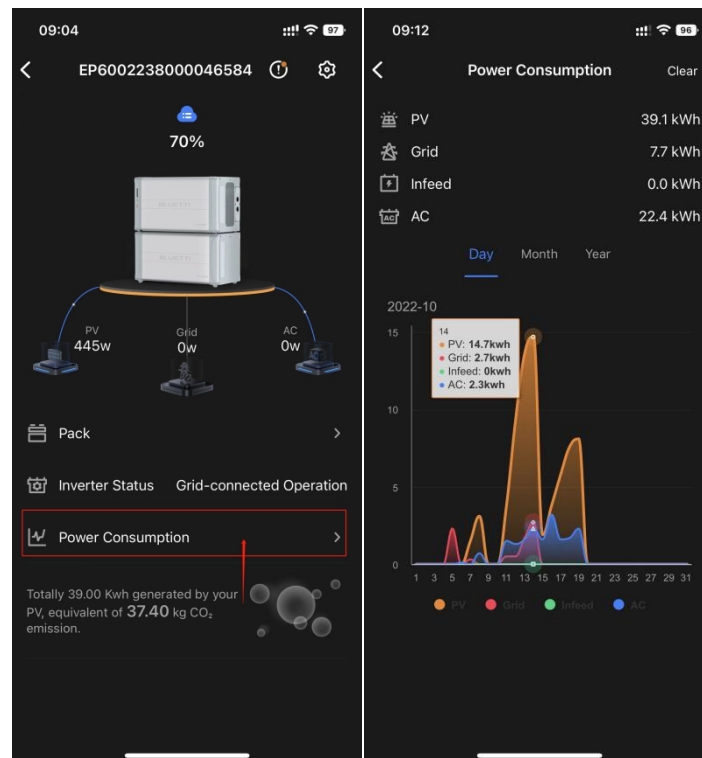
Tap  and then tap **History** to check the alarm history.



8.2 Power Consumption

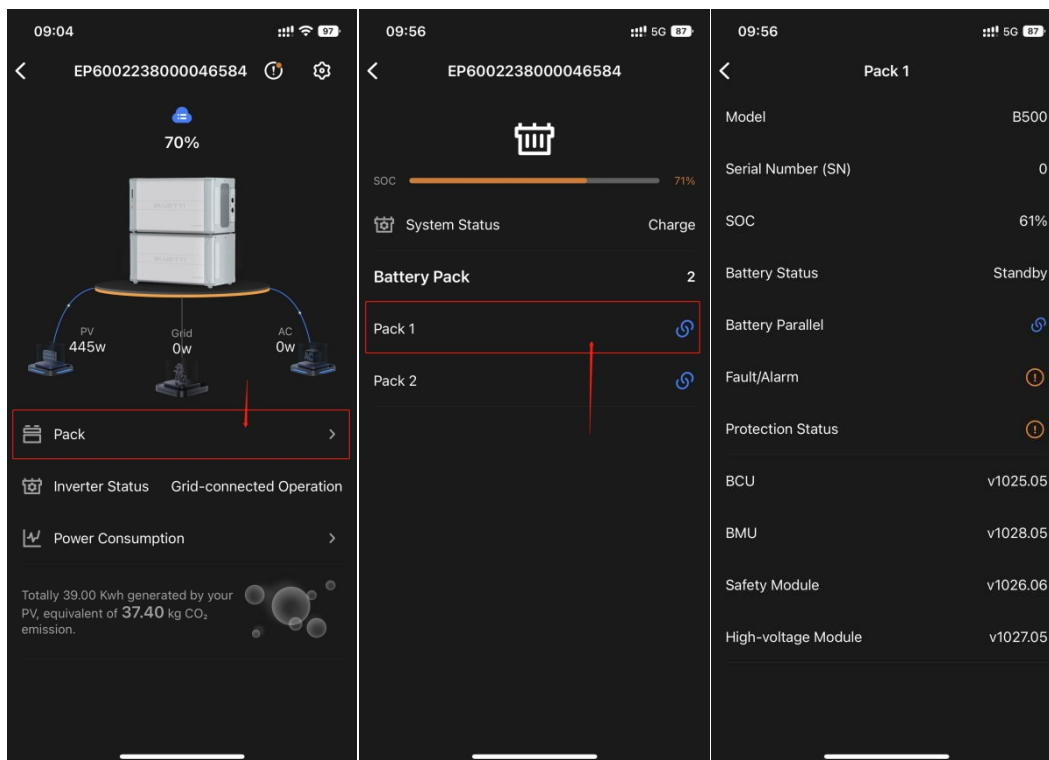
Tap Power Consumption to check the power consumption statics of the ESS. You can see the statics figure by **Day**, **Month** and **Year**.

Tap **Clear** to clear the statics data.



9. Battery Pack Status

Tap **Pack** and select the pack number to check the battery pack status.



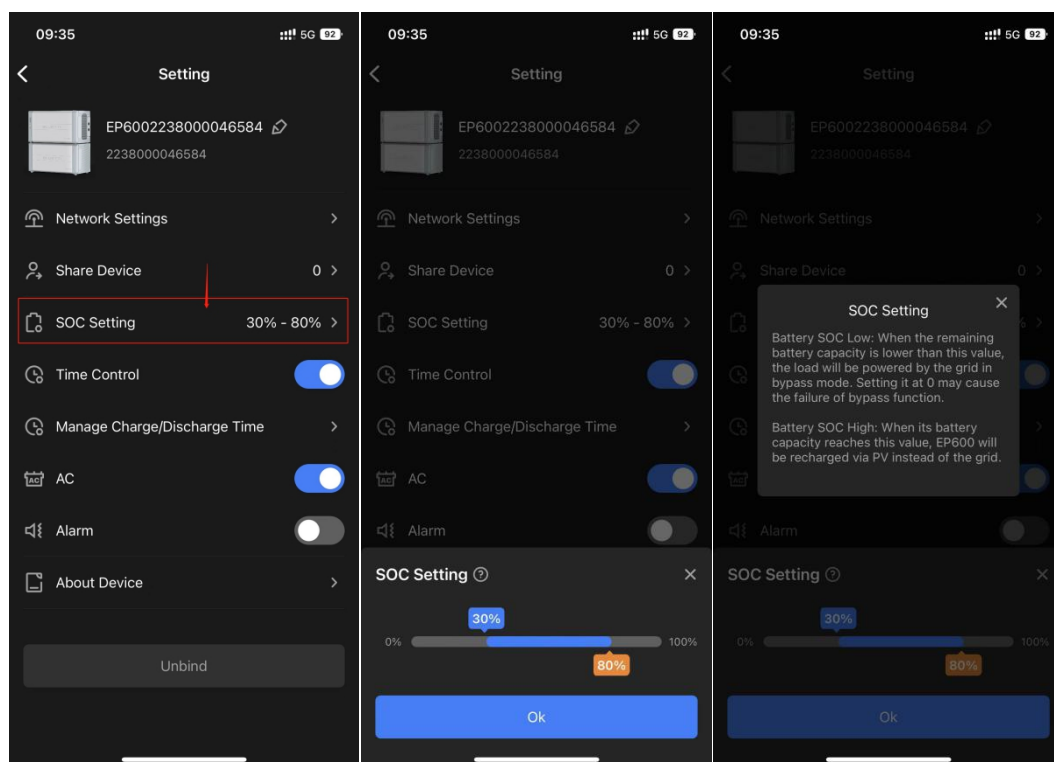
10. Settings

10.1 SOC Setting

Tap **SOC Setting** to set the SOC value.

Battery SOC Low: When the remaining battery capacity is lower than this value, the load will be powered by the grid in bypass mode. Setting it at 0 may cause the failure of bypass function.

Battery SOC High: When its battery capacity reaches this value, EP600 will be recharged via PV instead of the grid.



10.2 System Charging And Discharging Time Setting

Tap to enable **Time Control** and tap **Manage Charge/Discharge Time** to set the charging and discharging time of the ESS.

Parameter Description

Parameter	Setting description	Range
Label	Charging: EP600 ESS charges only. Discharge: EP600 ESS discharges only. Default: EP600 adopts the default self-consumption strategy.	<ul style="list-style-type: none"> ● Charging ● Discharging ● Default
Time	You can set 6 periods in a day. Overlapping and cross-day periods are not supported.	00:00~23:59

How does EP600 ESS help you slash your electricity bills with these periods?

If you pay a different price for the electricity based on the time of day, EP600 ESS

takes advantage of the low-cost solar and grid energy to supply your house during the day, while storing the excess in backup batteries for night use.

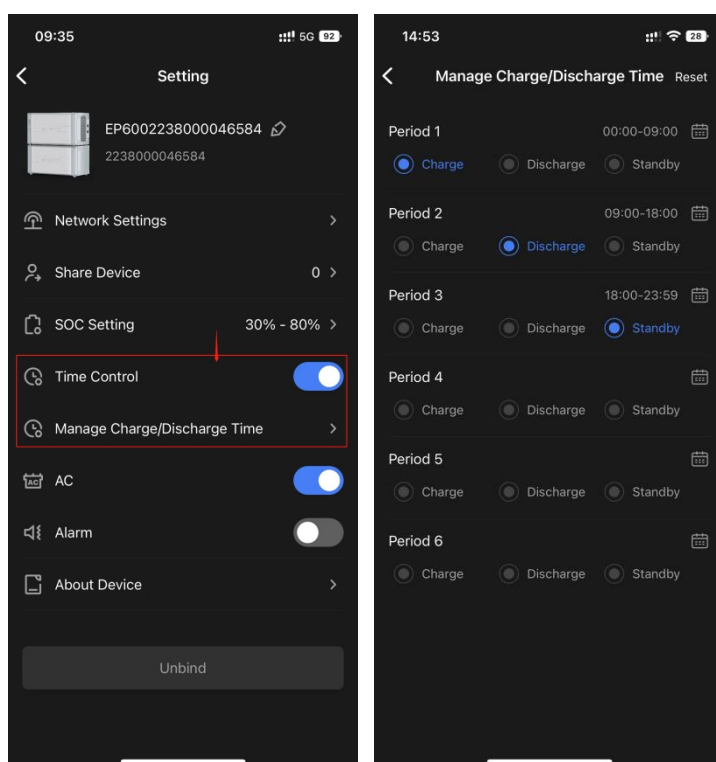
In this case, you can set the charging and discharging schedule like below:

Period 1: 00:00~09:00=>Charging

Period 2: 09:00~18:00=>Discharging

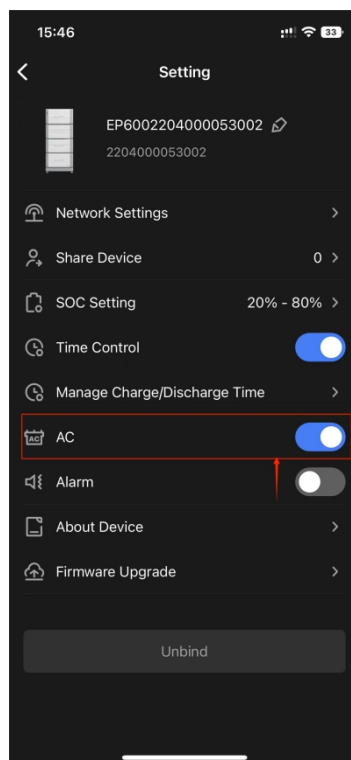
Period 3: 18:00~23:59=>Default

Note: The above is for reference only. Please set the schedule according to your needs.



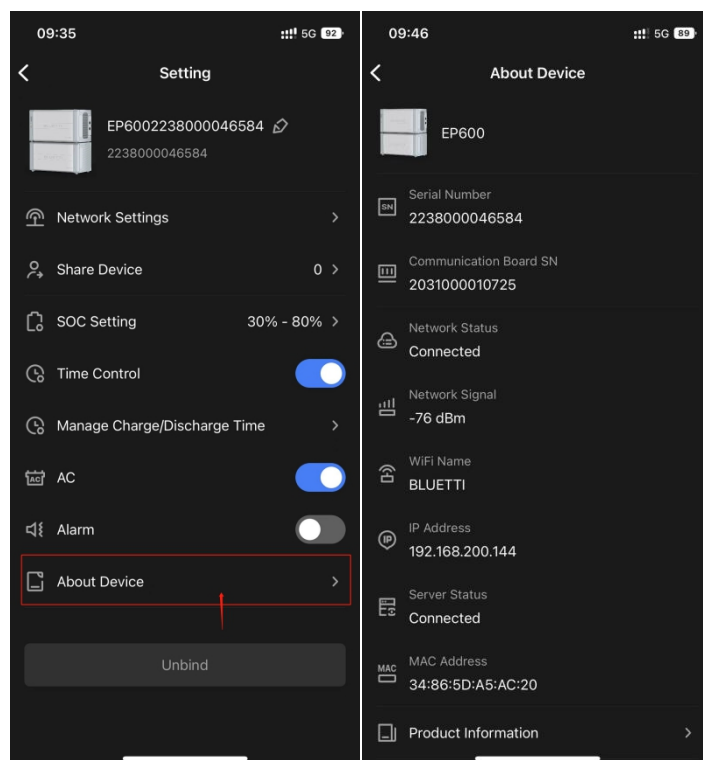
10.3 System Main Switch

Tap to turn on AC to power on the whole EP600 ESS.



10.4 System Information


Tap **About Device** to check the system information.

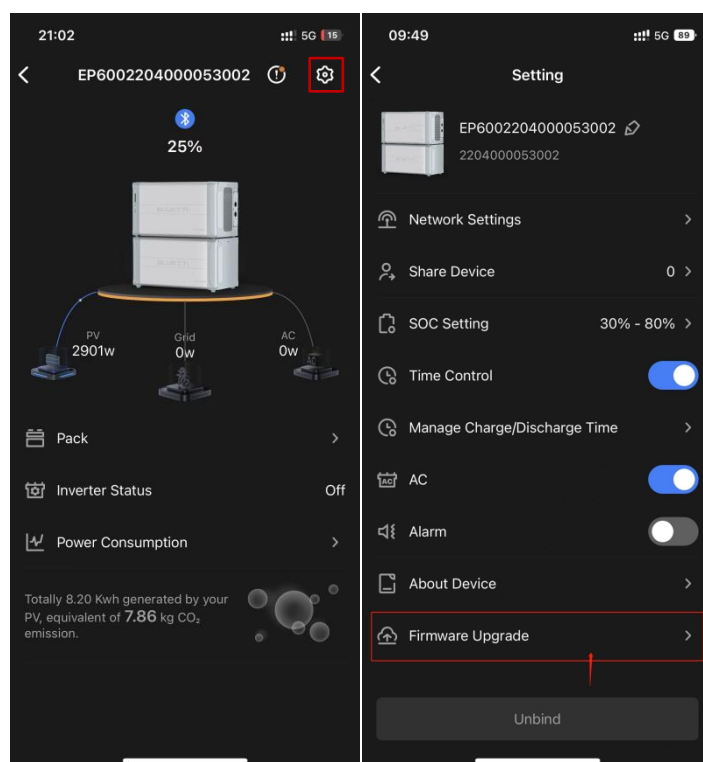


11. OTA Firmware Upgrade

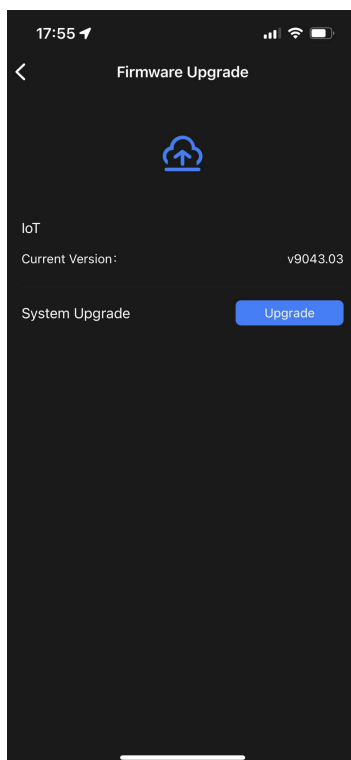
Before operating the EP600, please upgrade the firmware to the latest version to achieve a better user experience.

Upgrade Portal

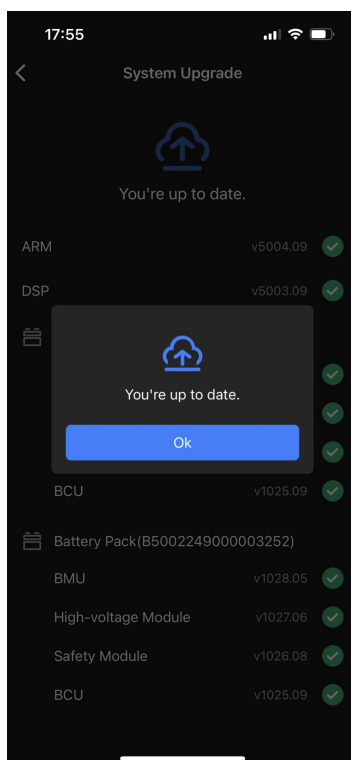
Connect to EP600 ESS via Bluetooth Direct Access, and tap  and then tap **Firmware Upgrade** to enter the Settings page for firmware upgrade.




Tap **Upgrade** to upgrade the system firmware.



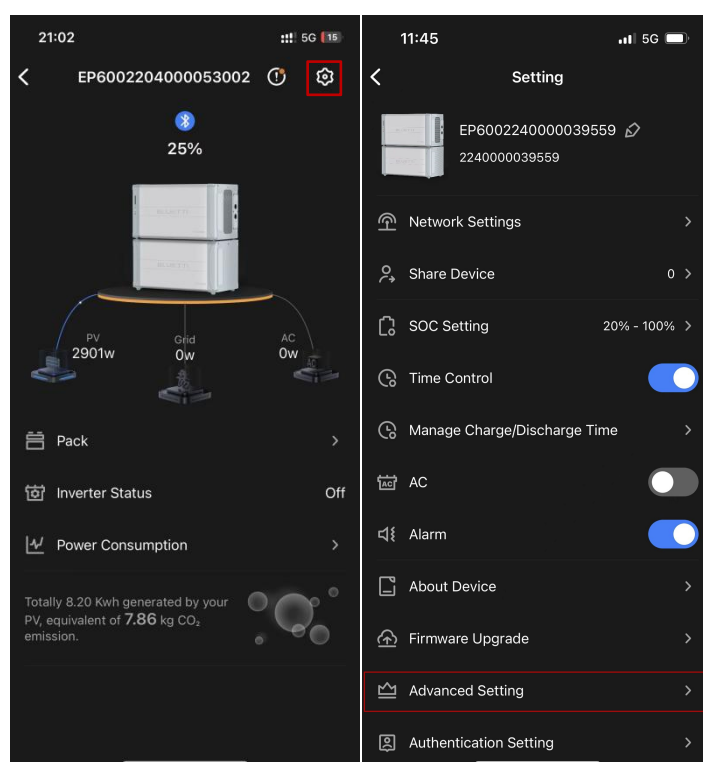
Upgrade the firmware until you see the pop-up **You're up to date.**



12. Advanced Settings

Tap  and tap **Advanced Settings** to check and configure the advanced settings of the ESS.

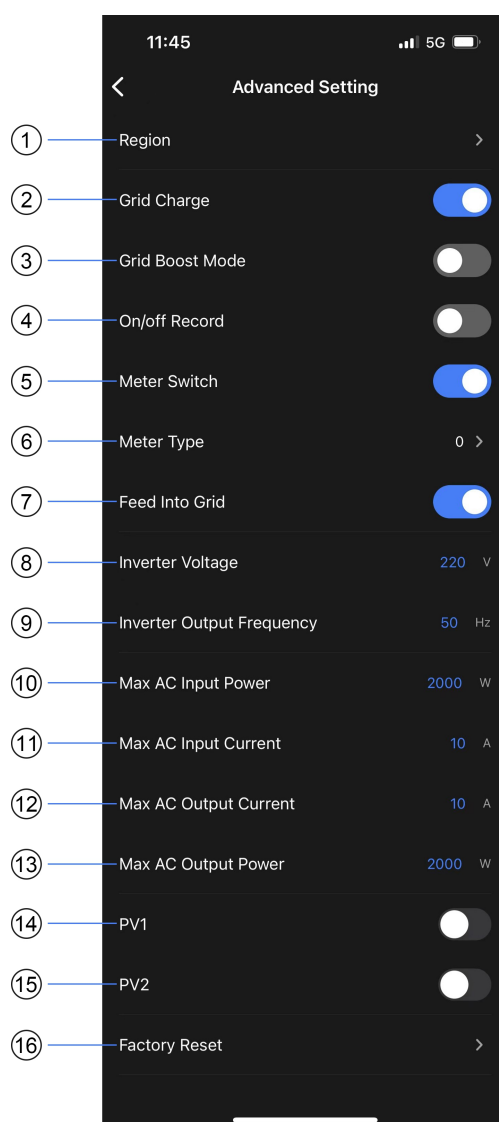
Note: The **Advanced Settings** only appears when you logged in with the permission of an installation agent. Contact BLUETTI support for more details.



Advanced Settings Description

No.	Description	No.	Description
1	Select the region you are using the ESS.	9	Set the output frequency of the Inverter.
2	Enable/Disable charging the ESS via the grid.	10	Set the max. input power from the grid to the ESS.
3	Enable/Disable the Grid Boost Mode.	11	Set the max. input current from the grid to the ESS.
4	Enable/Disable the record function of the ESS.	12	Set the max. output current from the ESS.

5	Turn on/off the meter.	13	Set the max. output power from the ESS.
6	Select the type of the meter.	14	Enable/Disable the PV1 channel.
7	Enable/Disable power feed to the grid from the ESS.	15	Enable/Disable the PV2 channel.
8	Set the Voltage of the Inverter.	16	Set the ESS to its factory default settings.


NOTE:

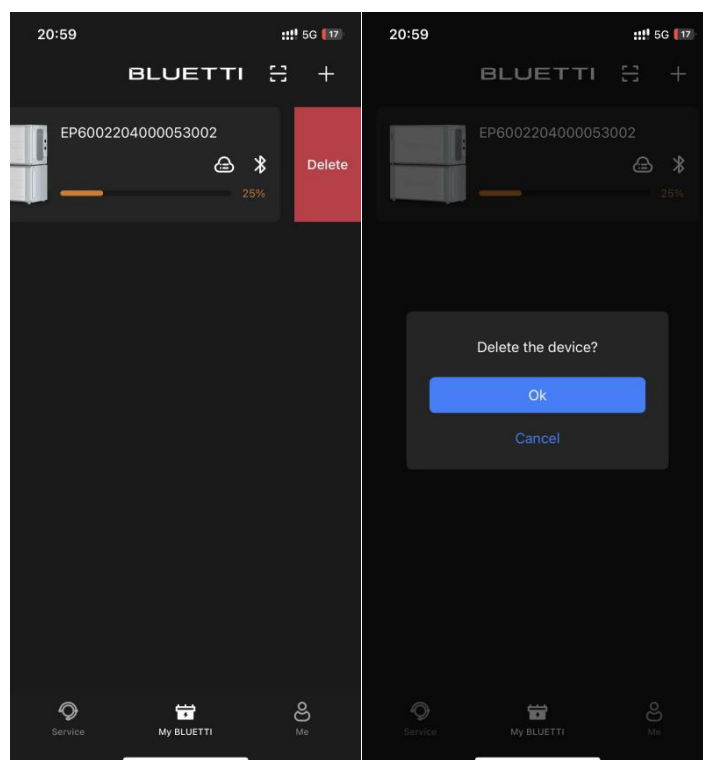
- Please firstly select the right region when using the grid-tied mode.
- After selecting the Region, DO NOT modify the other parameters of **Advanced Setting**.


13. Unbind

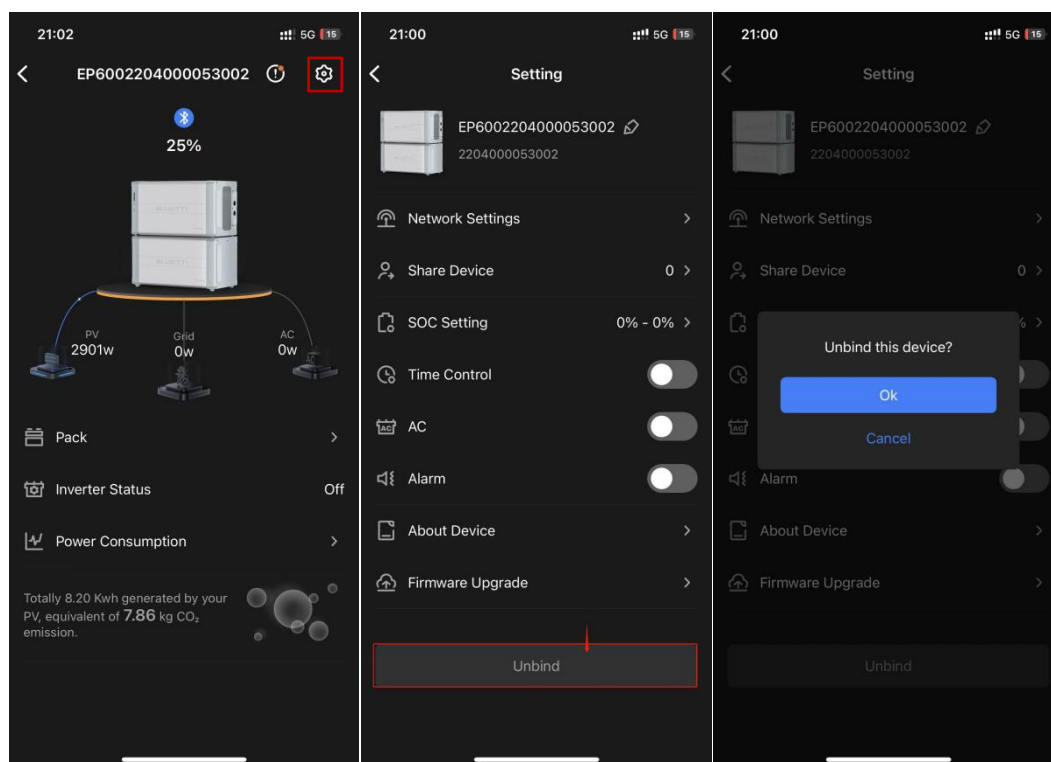
Before unbinding, please ensure that:

- BLUETTI App has access to your Bluetooth and location service (GPS).
- You've enabled the Bluetooth and GPS on your phone.
- EP600 ESS is in operation.

1: In the BLUETTI device list, long press the device you want to unbind (Android) or swipe left (iOS), and tap **Delete** to unbind. Tap **Ok** to confirm.



2: Connect to EP600 ESS via Bluetooth, tap  to enter the Settings page and tap **Unbind**. Tap **Ok** to confirm.



Note:

Your BLUETTI EP600 ESS can be bound to one account **ONLY**, while can be shared with multiple accounts (see EP600 ESS Sharing for details).

A BLUETTI account can be bound to multiple BLUETTI energy storage systems.

14. More Information

Website: www.bluettipower.com

Email: service@bluettipower.com